

.100" (2.54mm) Single Row Dual Body Breakaway Header
.100" (2.54mm) Dual Row Dual Body Breakaway Header



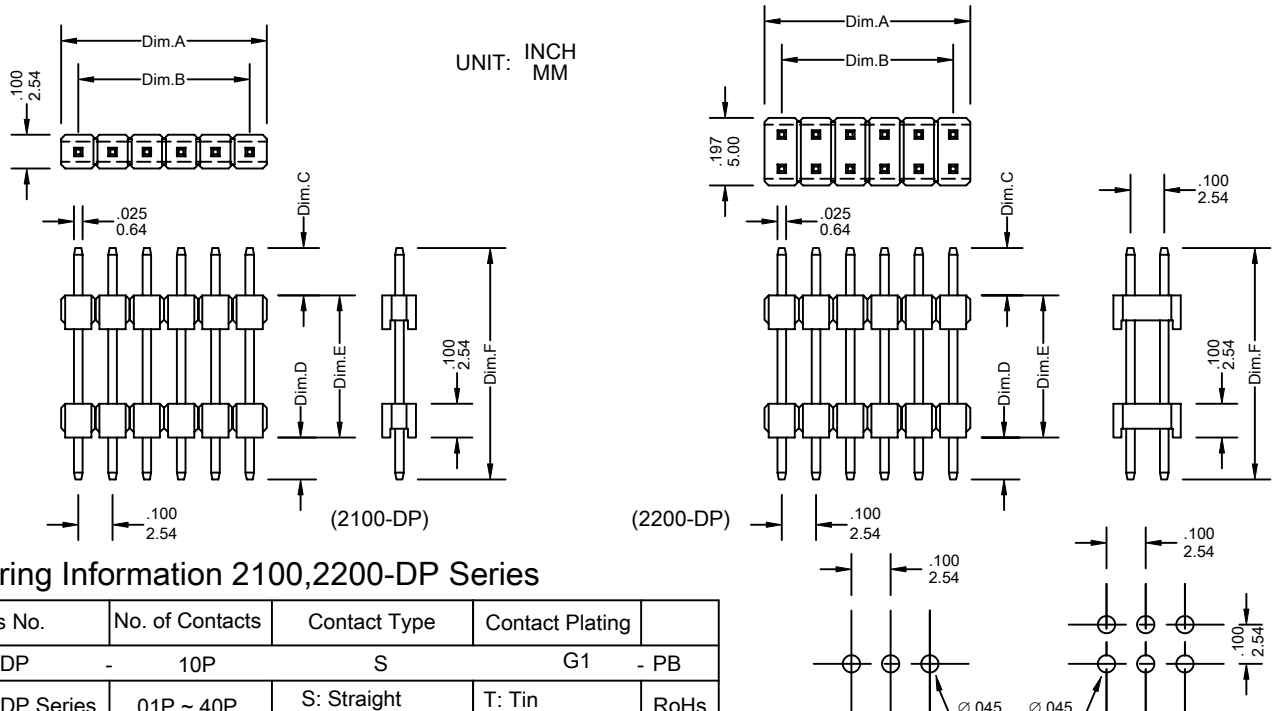
2100-DP Series
2200-DP Series

FEATURES:

- . 2100-DP Series 2-40 Circuits
- . 2200-DP Series 4-80 Circuits
- . .025"[0.64mm] Square wire pins
- . PBT+30% Glass Fiber [UL 94V-0]
- . Straight
- . P.C.Board and back planes

SPECIFICATIONS:

- . Current rating: 3A AC. DC
- . Voltage rating: 250V AC. Maximum
- . Temperature range: -40°C ~ +105°C
- . Contact resistance: Initial Value/10mΩ max.
After environmental testing /20mΩ max.
- . Insulation resistance: 5000 MΩ min
- . Withstand voltage: 1500V AC/minute
- . Applicable PC board thickness: .063"[1.6mm]



Ordering Information 2100,2200-DP Series

Series No.	No. of Contacts	Contact Type	Contact Plating	
2100-DP	10P	S	G1	- PB
2100-DP Series	01P ~ 40P	S: Straight	T: Tin G1: Gold Flash G5: 5u" Gold G10: 10u" Gold G15: 15u" Gold G30: 30u" Gold [G: Full Gold]	RoHs
2200-DP Series	2X02P ~ 2X40P			
* PIN LENGTH CAN BE CHANGED TO CUSTOM'S SPECIFICATION		Dim.C= .236 6.00		
* IF NOT YOUR SPECIFICATION, PLEASE ADVIS THE LENGHT OF Dim.C,D,E,F		Dim.D= .128 3.26		

NOTE: Dim.C=Mating Dim.D=P.C Tali Contact Factory To Order Dimensions C,D,E And F Are Customer-Specifide

Dimensional Information

Circuits	Dim.A± .008 0.20	Dim.B± .008 0.20	Circuits	Dim.A± .008 0.20	Dim.B± .008 0.20	Circuits	Dim.A± .008 0.20	Dim.B± .008 0.20
2	.200 5.08	.100 2.54	3	.300 7.62	.200 5.08	4	.400 10.16	.300 7.62

2100-DP Series
 * FOR CIRCUIT SIZES 5 THROUGH 40 ADD .100" OR 2.54MM FOR EACH ADDITIONAL PIN.

Circuits	Dim.A± .008 0.20	Dim.B± .008 0.20	Circuits	Dim.A± .008 0.20	Dim.B± .008 0.20	Circuits	Dim.A± .008 0.20	Dim.B± .008 0.20
4	.200 5.08	.100 2.54	6	.300 7.62	.200 5.08	8	.400 10.16	.300 7.62

2200-DP Series
 * FOR CIRCUIT SIZES 10 THROUGH 80 ADD .100" OR 2.54MM FOR EACH ADDITIONAL PIN.