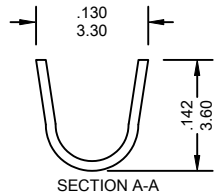
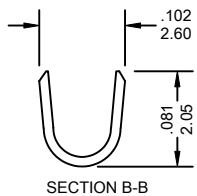


2410-T Series

FEATURES:

- . Mates with VEN [2410] series female connector
- . Accepts AWG 18-26 wire range
- . Material is Brass or Phos. Bronze
- . 2410-T Qty/Reel: 6K PCS

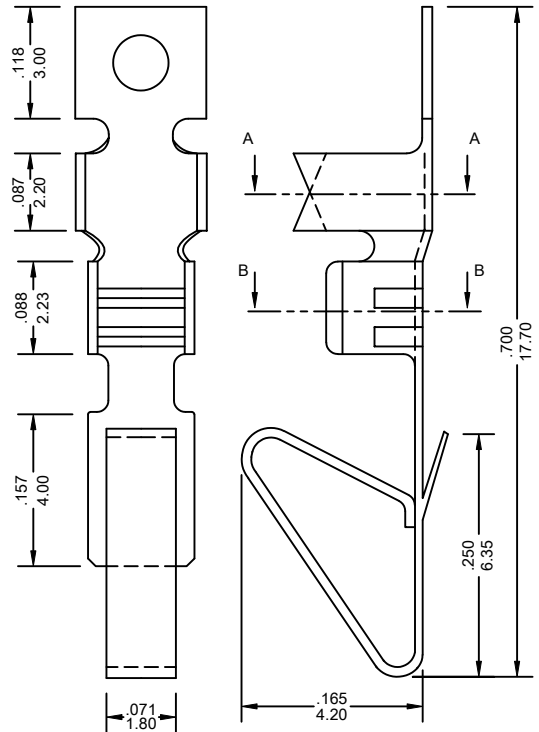


UNIT: INCH
MM

Wire Gauge (AWG)	18	20	22	24	26
Pull out Force (lb)	20.0	15.0	12.0	8.0	6.0

Ordering Information

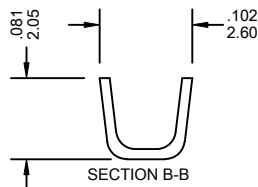
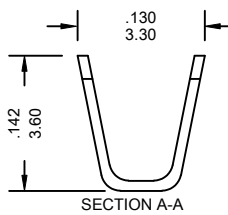
Series No.	Material	Contact Plating	
2410-T	BS	T	PB
2410-T Series	BS: Brass PS: Phos.Bronze	T: Tin S1: Gold Flash S5: 5u" Gold S10: 10u" Gold S15: 15u" Gold S30: 30u" Gold [S: Selective Gold]	RoHs



2410-TA Series

FEATURES:

- . Mates with VEN [2410] series female connector
- . Accepts AWG 18-26 wire range
- . Material is Brass or Phos. Bronze
- . 2410-TA Qty/Reel: 7K PCS



UNIT: INCH
MM

Wire Gauge (AWG)	18	20	22	24	26
Pull out Force (lb)	20.0	15.0	12.0	8.0	6.0

Ordering Information

Series No.	Material	Contact Plating	
2410-TA	TBS	T	PB
2410-TA Series	TBS: Brass TPS: Phos.Bronze	T: Tin S1: Gold Flash S5: 5u" Gold S10: 10u" Gold S15: 15u" Gold S30: 30u" Gold [S: Selective Gold]	RoHs

