

**.100"X.100" (2.54mmX2.54mm)
Center Low Profile Header For Use With IDC Socket Connector**



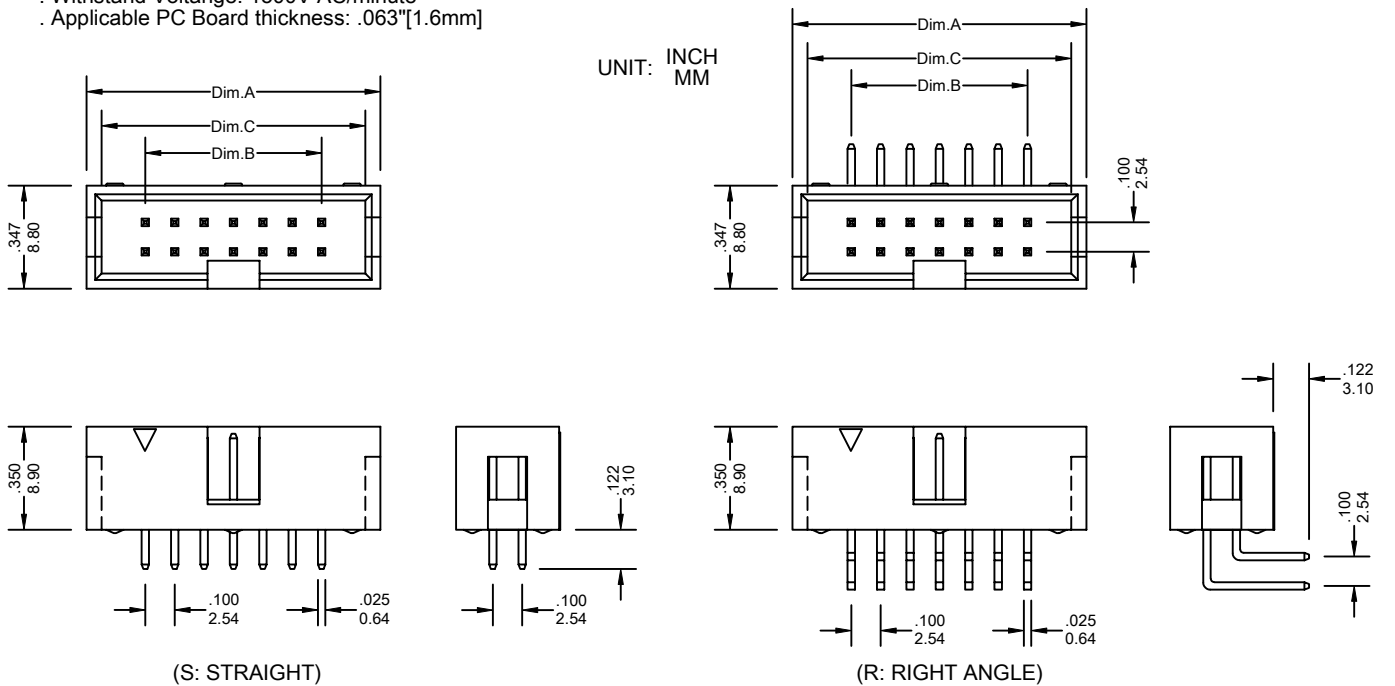
3510 Series

FEATURES:

- . 06-64 Circuits
- . PBT + 30% Glass Fiber [UL 94V-0]
- . Low profile header body helps maximum packaging density
- . Available with wrap post tail header
- . Fully shrouded body provides maximum protection for header main pins

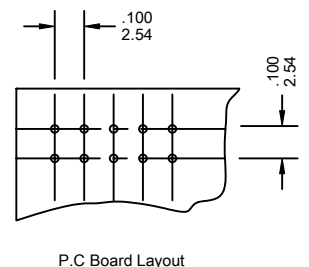
SPECIFICATIONS:

- . Current rating: 3A AC. DC
- . Voltage rating: 250V AC. Maximum
- . Temperature range: -40°C~ +105°C .
- . Contact resistance: Initial Value/10mΩ max.
After environmental testing /20mΩ max.
- . Insulation resistance: 5000 MΩ min
- . Withstand Voltage: 1500V AC/minute
- . Applicable PC Board thickness: .063"[1.6mm]



Ordering Information 3510 Series

Series No.	No. of Contacts	Contact Type	Contact Plating	
3510	- 34P	S	T	- PB
3510 Series	06P 24P 60P 08P 26P 64P 10P 30P 14P 34P 16P 40P 20P 50P	S: STRAIGHT R: RIGHT ANGLE	T: Tin G1: Gold Flash G5: 5u" Gold G10: 10u" Gold G15: 15u" Gold G30: 30u" Gold [G: Full Gold] S: Selective Gold S1: Gold Flash S5: 5u" Gold S10: 10u" Gold S15: 15u" Gold S30: 30u" Gold [S: Selective Gold]	RoHs



Dimensional Information

Dimension	Circuits												
	10	14	16	20	24	26	30	34	40	50	60	64	
Dim.A±	.010 0.25	.800 20.32	1.000 25.40	1.100 27.94	1.300 33.02	1.500 38.10	1.600 40.64	1.800 45.72	2.000 50.80	2.300 58.42	2.800 71.12	3.300 83.82	3.500 88.90
Dim.B±	.010 0.25	.400 10.16	.600 15.24	.700 17.78	.900 22.86	1.100 27.94	1.200 30.48	1.400 35.56	1.600 40.64	1.900 48.26	2.400 60.96	2.900 73.66	3.100 78.74
Dim.C±	.010 0.25	.706 17.92	.906 23.00	1.006 25.54	1.206 30.62	1.406 35.70	1.506 38.24	1.706 43.32	1.906 48.40	2.206 56.02	2.706 68.72	3.206 81.42	3.406 86.50