

.156" (3.96mm) Board-in Crimp Style Connectors

3906 Series
3906-T Series

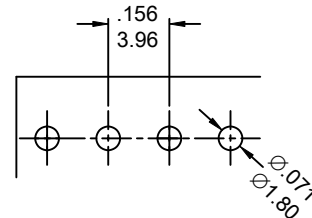
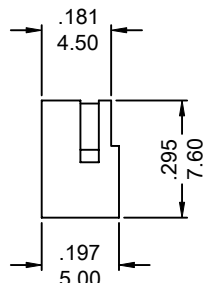
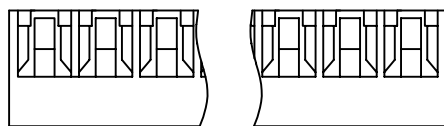
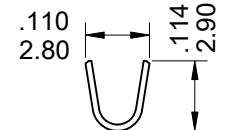
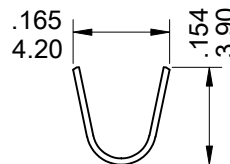
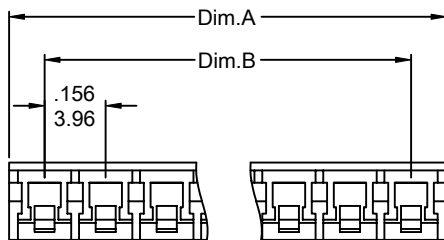
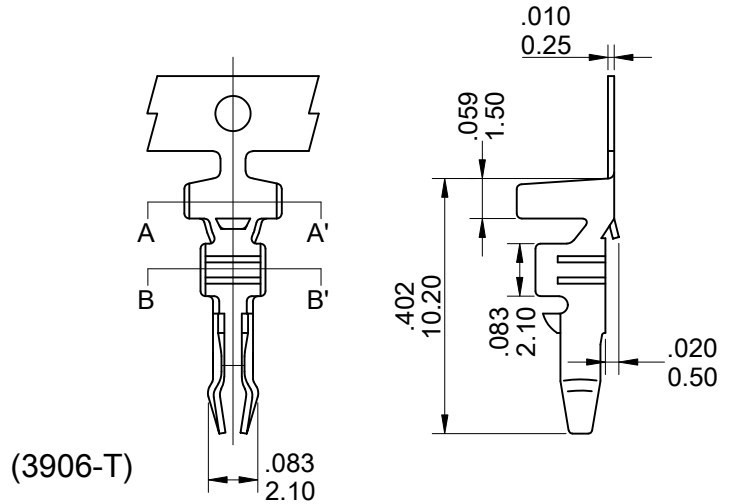
FEATURES:

- . DIP TYPE
- . 2-15 Circuits
- . Housing, Nylon 66 [UL 94V-0]

SPECIFICATIONS:

- . Current rating: 7A AC, DC
- . Voltage rating: 250V AC, Maximum
- . Temperature range: -25°C ~ +85°C
- . Contact resistance: 5mΩ max.
- . Insulation resistance: 1000 MΩ min.
- . Insulation O.D.: 3.10mm Max.
- . Withstand Voltage: 800V AC/minute
- . Applicable PC board thickness: .063" [1.6mm]
- . Applicable wire: #22 to #16 AWG

UNIT: INCH
MM



(3906)

PC BOARD LAYOUT

Ordering Information 3906 Series

Series No.	No. of Contacts	
3906	- 04P	- A
3906 Series	02P ~ 15P	RoHs

Ordering Information 3906-T Series

Series No.	Material	Contact Plating	
3906-T	BS	T	- PB
3906-T Series	BS:Brass PS:Phos.Bronze	T: Tin	RoHs
Insulation O.D.: 3.10mm Max.		Qty/Reel: 4500 PCS	

Dimensional Information

Circuits	Dim.A± ^{.008} / _{0.20}	Dim.B± ^{.008} / _{0.20}	Circuits	Dim.A± ^{.008} / _{0.20}	Dim.B± ^{.008} / _{0.20}	Circuits	Dim.A± ^{.008} / _{0.20}	Dim.B± ^{.008} / _{0.20}	Circuits	Dim.A± ^{.008} / _{0.20}	Dim.B± ^{.008} / _{0.20}
2	.337 8.56	.156 3.96	3	.493 12.52	.312 7.92	4	.649 16.48	.468 11.88	5	.805 20.44	.624 15.84
6	.961 24.40	.779 19.80	7	1.117 28.36	.935 23.76	8	1.272 32.32	1.091 27.72	9	1.428 36.28	1.247 31.68
10	1.584 40.24	1.403 35.64	11	1.740 44.20	1.559 39.60	12	1.896 48.16	1.715 43.56	13	2.052 52.12	1.871 47.52
14	2.208 56.08	2.027 51.48	15	2.364 60.04	2.183 55.44						