

D-Subminiature Connector .402" (10.20mm) P.C.B. Mount Right Angle With Male Female Type



DPRM3 Series (Plug)&(Socket)

FEATURES:

- . Contact positions: 09,15,25,37
- . Available in socket right angle styles
- . Provides ground continuity from cable-to-PC board
- . Available in 9.40mm of body length measured from front face of mounting flange to first row of contacts
- . Optional plating available
- . Various options of fasten types
- . Mates with industry compatible connectors

MATERIALS:

- . Contacts: Brass and Phosphor Bronze
- . Housing: PBT+30% Glass Fiber (UL 94V-0)
- . Shell: Cold Roller Steel

ELECTRICAL CHARACTERISTICS:

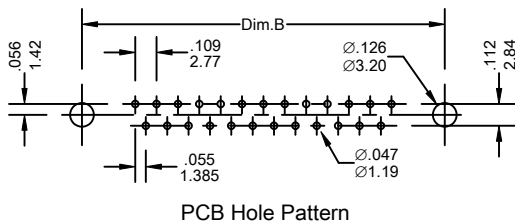
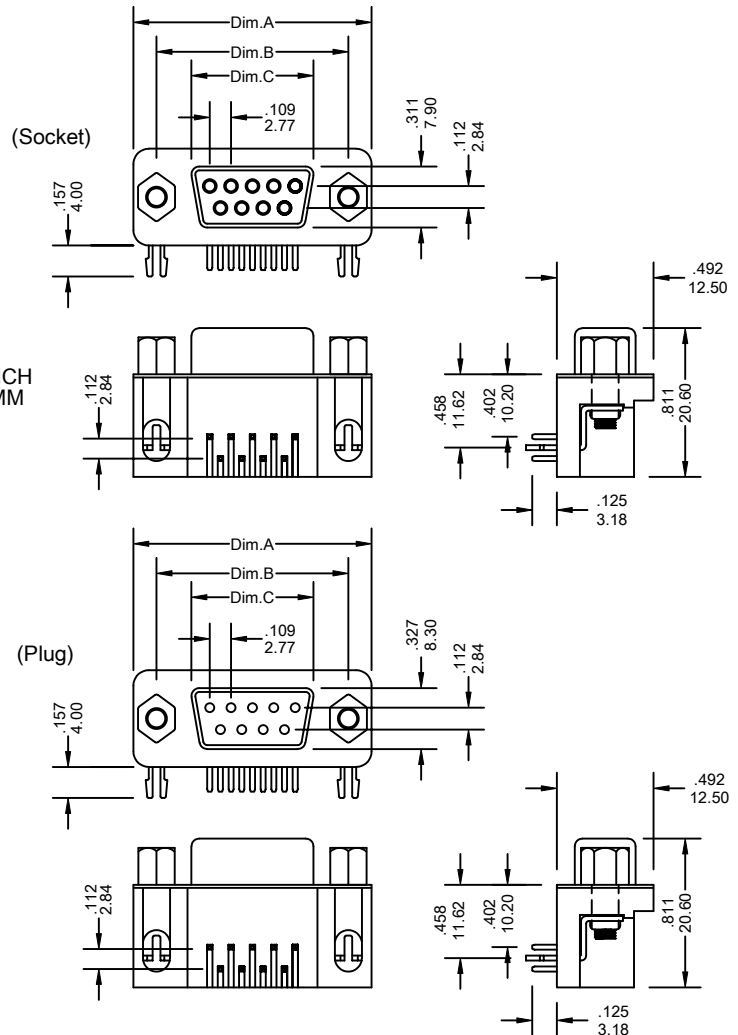
- . Current rating: 5 Amperes
- . Withstanding Voltage: AC 1250V r.m.s
- . Insulation Resistance: 5000 Megohms Minimum at DC 500V
- . Contact Resistance: 15 Milliohms Maximum
- . Operation Temperature: -55C° ~ +105C°
- . Applicable P.C.Board thickness: .063" [1.6mm]

MECHANICAL CHARACTERISTICS:

- . Contact Resistance Force: 341 g. Maximum
- . Contact Separation Force: 20 g. Minimum

FINISHES:

- . Contact: Gold Flash ,10,15,30,50u"
- . Shell: Nickel Plated, Tin Plated, Zinc Plated



Ordering Information DPRM3 Series

Series No.	No. of Contacts	Contact Type	Shell Finish	Mounting Hole	Contacts Plating	Insulation Color	
DPRM3	- 25	M -	1	0	0	0	- PB
DPRM3 Series	09 15 25 37	M: Male (Plug) F: Female (Socket)	0: Nickel 1: Tin 2: Zinc	0: Through Hole 1: Front Boardlock nuts 2: Rivet with Boardlock Z Shape	0: Gold Flash 1: 5u" Gold 2: 10u" Gold 3: 15u" Gold 4: 30u" Gold 5: Selective Gold Flash 6: Selective 5u" Gold 7: Selective 10u" Gold 8: Selective 15u" Gold 9: Selective 30u" Gold	0: Black 1: Blue 2: White 3: Grey	RoHs

Dimensional Information (Socket)

Dim.	Circuits				
	9	15	25	37	
Dim.A±	.015 0.38	1.213 30.80	1.543 39.20	2.089 53.05	2.732 69.40
Dim.B±	.005 0.13	.984 25.00	1.311 33.30	1.852 47.05	2.500 63.50
Dim.C±	.005 0.13	.642 16.30	.969 24.60	1.510 38.35	2.158 54.80

Dimensional Information (Plug)

Dim.	Circuits				
	9	15	25	37	
Dim.A±	.015 0.38	1.213 30.80	1.543 39.20	2.089 53.05	2.732 69.40
Dim.B±	.005 0.13	.984 25.00	1.311 33.30	1.852 47.05	2.500 63.50
Dim.C±	.005 0.13	.665 16.90	.994 25.25	1.534 38.95	2.181 55.40